

Aftermarket Parts for:
Kliklok-Woodman



002654A
Plate



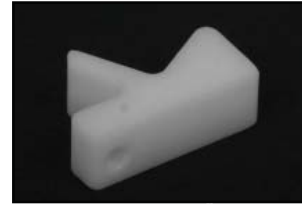
003067A
Pin



003068A
Pin



003111C
Arm, Carriage Crank, 12"



004873A
Holder, Air Blast Tube



022529B
Shaft



022536B
Shaft



027941B
Shaft, Drive Belt



076874
Clevis, Knife Quad Gearbox



A037681
Arm



A037682
Arm



A05374
Arm



A05470
Rod



A05808
Seal Bar, Seam



A05846
Drive Yoke, Knife



A08753
Milker



A13892
Roller



A14502
Crank



A14550
Aluminum Bracket



A14551
Pulley, Timing



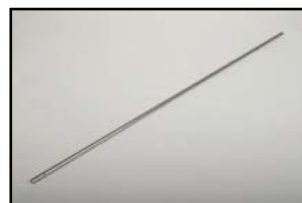
A14555
Shaft, Idler Belt



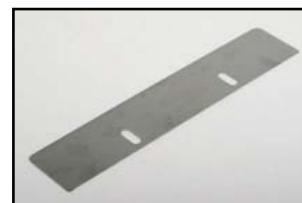
A14767
Crossbar, Inner



A14769
Crossbar, Outer



A14857
Shaft, Dancer Bar



A15001
Crumb Plate

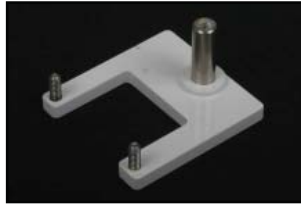
Aftermarket Parts for:
Kliklok-Woodman



A15040A
Bracket



A15370
Pulley



A15371
Flange



A15564A
Plate, Aluminum Pivot, Back
Seam Seal



A15565
Yoke, Seam Seal



B08D
Washer



D05160
Poker



D05190
Plate



D10865
Block, Stroke Adjustment



D12273
Spring Bracket



D12274
Spring Bracket



D12317
Mount



D14328
Plate



D14329B
Brake Band



D14437C
Clamp, Inside



D14662D
Plate



D14717
Arm, Vibrator Drive



D14741E
Seal Bar, 17" Back Seam



D15281A
Bracket, Back Seal Adjust



D15459
Mlker: Moveable



D5161
Mount, Coverage Guide



ETSR3/8 1-1/8 X
Cylinder, Air



P00113009
Shaft 3/4" x 17-1/2"



P00130016
Cylinder, Air



P0045597
Spring, Deflator

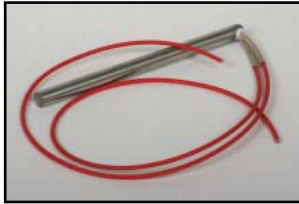
Aftermarket Parts for: Kliklok-Woodman



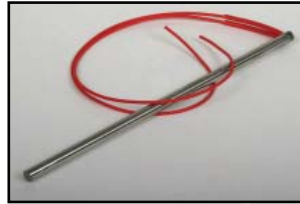
P0061275
Probe: Temperature



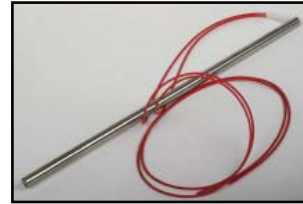
P0072092-200
Cartridge Heater



P0072092
Cartridge Heater



P0072092-MOD
Cartridge Heater, 12.5" long



P0072157
Cartridge Heater, 585W x 115V



P00776139
Overlay, Keypad



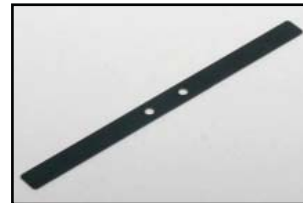
Y05244
Plate, Spring Depressor



Y05364
Milker



Y05386
Stud, Brake Pivot



Y05389
Milker, Spring Steel



Y07163
Shoe, Brake



Y07617
Stud



Y08593
Pin, Drive Yoke



Y08789
Link



Y09056
Plate, Milker Spacer



Y09482
Yoke, Knife



Y09805
Pin, Link



Y09964
Link, Connecting Arm



Y09965
Link, Connecting



Y09977
Link, Knife



Y09985
Pin



Y10017A
Spacer



Y10391
Finger, Brake



Y10459
Rod Cap



Y10950
Scalloped Knife

Aftermarket Parts for:
Kliklok-Woodman



Y11727
Pulley, Timing,



Y11778
Locking Handle



Y12168B
Screw



Y12462
Clamp, Rubber



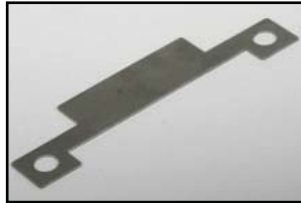
Y13168
Spring Retainer Plate



Y13554
Roller, Floating Feed



Y13575
Milker



Y13585
Milker Spacer Plate



Y14909
Bushing



Y15093A
Scalloped Knife



Y15497
Clamp, Rubber



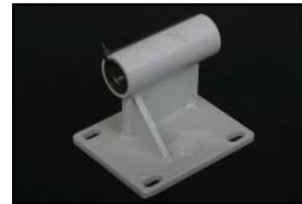
Y17073
Vibrator Link



Y17183A
Pin



Y17211
Crank



Y17212
Bracket, Vibrator Arm



Y17330
Clevis, Rod, Jaw Carriage
Ass'y



Y17331
Stud



Y17332
Rod, Outer Carriage



Y17334
Rod, Inner Carriage



Y17384B
Bearing, Rod End, Cylinder
Clevis



Y17406A
Plate



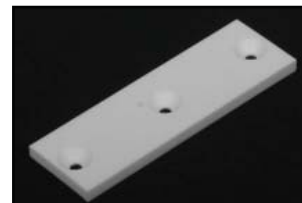
Y17456
Clevis, Poker



Y17756
Bracket, Tee Fitting

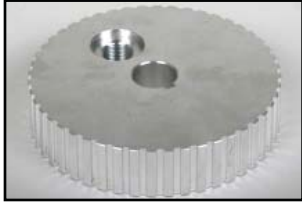


Y17882
Plate, Backing



Y17883
Plate, Rub, Belt Advance

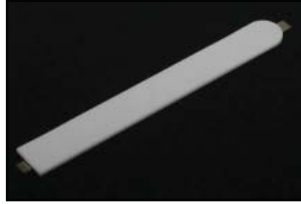
Aftermarket Parts for:
Kliklok-Woodman



Y18009
Pulley, Timing



Y18487
Cap, Spring



Y18558
Teflon Milker



Y18558-S
Slip Pad



Y18781
Spacer, Milking Plate



Y19209
Aluminum Bracket